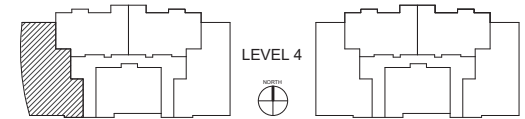
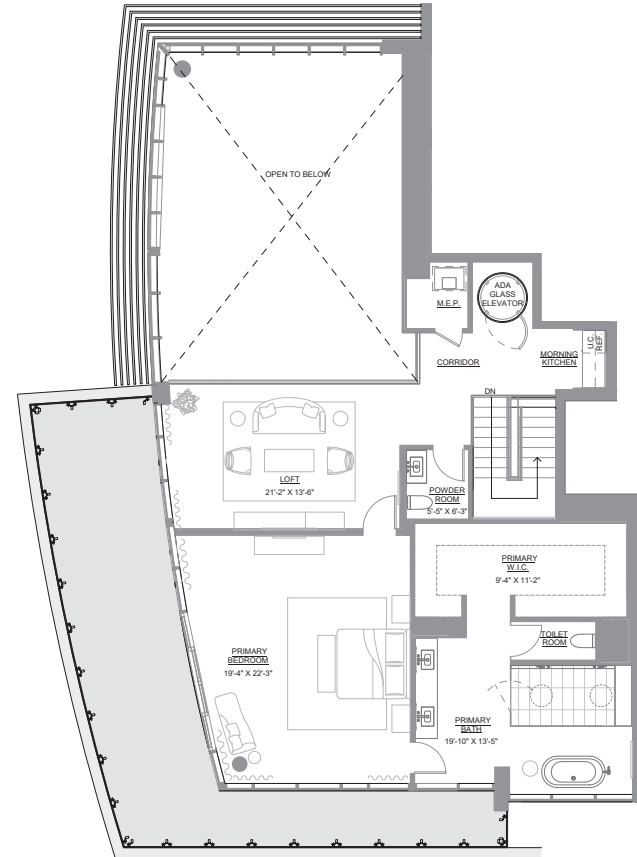
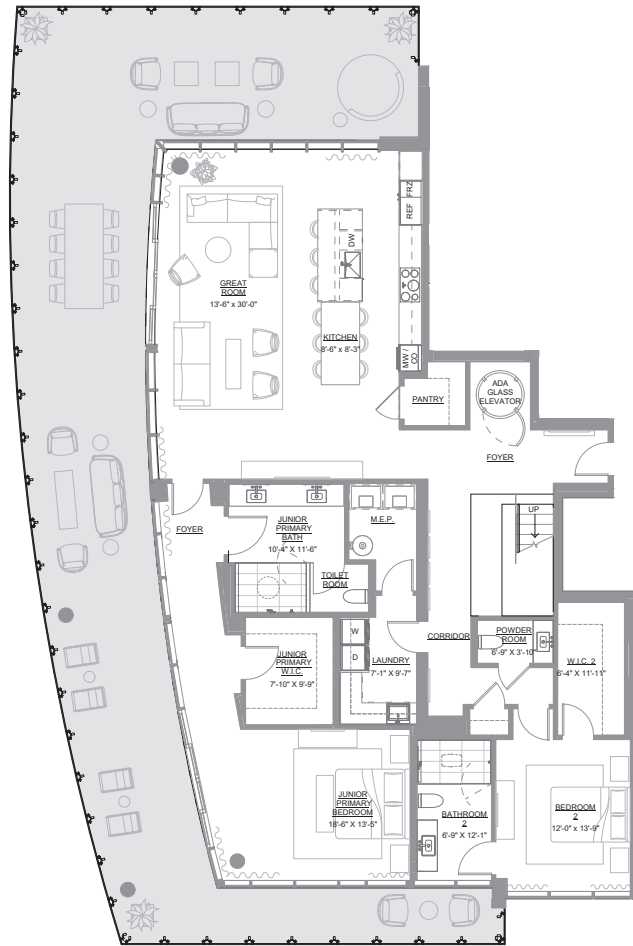
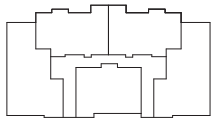


## UNIT A-401

UNIT TYPE F  
3 BR / 3 BATH + 2 POWDER  
UNIT AREA: 3890 SF  
TERRACE AREA: 1942 SF  
TOTAL AREA: 5832 SF



LEVEL 4



ORAL REPRESENTATIONS CANNOT BE RELIED UPON AS CORRECTLY STATING REPRESENTATIONS OF THE DEVELOPER. FOR CORRECT REPRESENTATIONS, MAKE REFERENCE TO THE DOCUMENTS REQUIRED BY SECTION 718.503, FLORIDA STATUTES, TO BE FURNISHED BY A DEVELOPER TO A BUYER OR LESSEE.

All artist's renderings are proposed concepts shown only for marketing purposes and are based upon current development plans, which are subject to change by the Developer, Pier 66 Ventures, which reserves the right to make changes at its sole discretion without prior notice or approval of the purchaser. This project has been filed in the state of Florida and no other state. This is not an offer to sell or solicitation of offers to buy the condominium units in states where such offer or solicitation cannot be made. These plans do not constitute an offer where prior registration or other qualification is required. Prices, availability, plans, features, dimensions, specifications, and amenities are subject to change at any time without notice. All Rights Reserved. Equal Housing Opportunity. All listed unit areas have been calculated using BOMA Method A (unit area measured to outside face of exterior walls, centerline of demising walls, and far side finished surface of common corridor walls; major vertical penetrations are excluded). There are other various methods for calculating the total square footage of a condominium unit and depending on the method of calculation, the quoted square footage of a condominium may vary by more than a nominal amount. All dimensions are approximate and all floor plans and development plans are subject to change.

