

RESIDENCE DUPLEX B

FLOOR 78 | ONE OF TWO

ROOMS

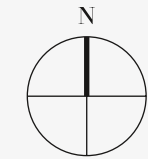
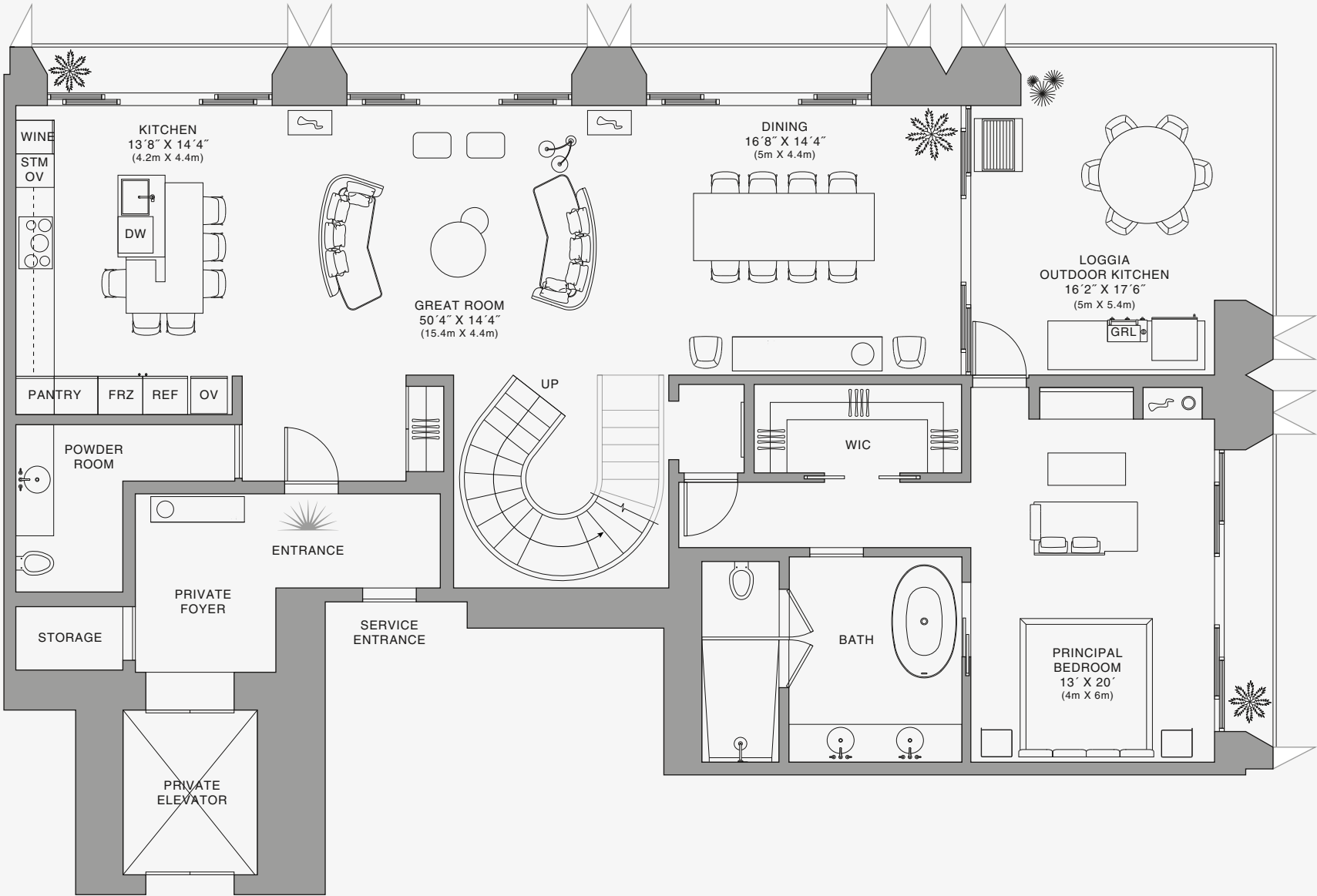
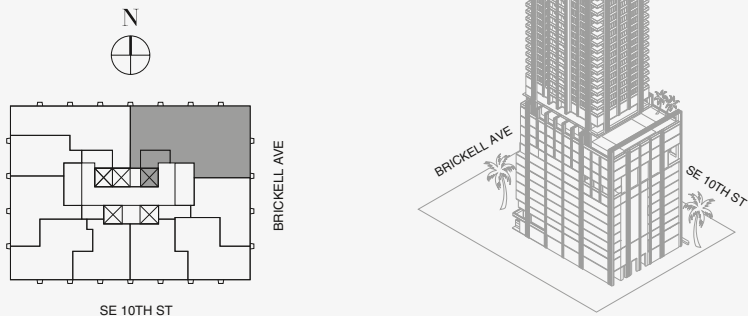
- 3 Bedrooms
- 3 Bathrooms
- 2 Powder Room

SQUARE FOOTAGES (SQUARE METERS)

- Indoor: 4,030 SQF (375 SM)
- Outdoor: 790 SQF (73 SM)
- Total: 4,820 SQF (448 SM)

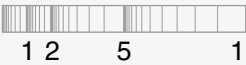
FEATURES

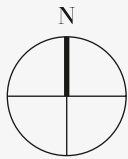
- 888 Duplex Suite w/ Grand Staircase
- 888 Room
- Furniture by Dolce&Gabbana
- 11' Ceiling Height
- 2 Loggias & Outdoor Kitchen
- Views: North East



Biscayne Bay

Stated dimensions are measured to the exterior boundaries of the exterior walls and the centerline of interior demising walls and in fact vary from the dimensions that would be determined by using the description and definition of the "Unit" set forth in the Declaration (which generally only includes the interior airspace between the perimeter walls and excludes interior structural components). For your reference, the area of the Unit, determined in accordance with those defined unit boundaries, is set forth on Exhibit "3" to the Declaration of Condominium. Note that measurements of rooms set forth on this floor plan are generally taken at the greatest points of each given room (as if the room were a perfect rectangle), without regard for any cutouts. Accordingly, the area of the actual room will typically be smaller than the product obtained by multiplying the stated length times width. All dimensions are approximate and may vary with actual construction, and all floor plans and development plans are subject to change. The Condominium is not owned, developed or sold by Dolce & Gabbana S.r.l or any of its affiliates (the "Brand"). Developer uses Dolce & Gabbana marks pursuant to a license agreement with the Brand, terminable according to its terms. The Brand assumes no responsibility or liability in connection with the project, and makes no representation or warranty in respect thereof.





RESIDENCE DUPLEX B

FLOOR 78 | TWO OF TWO

ROOMS

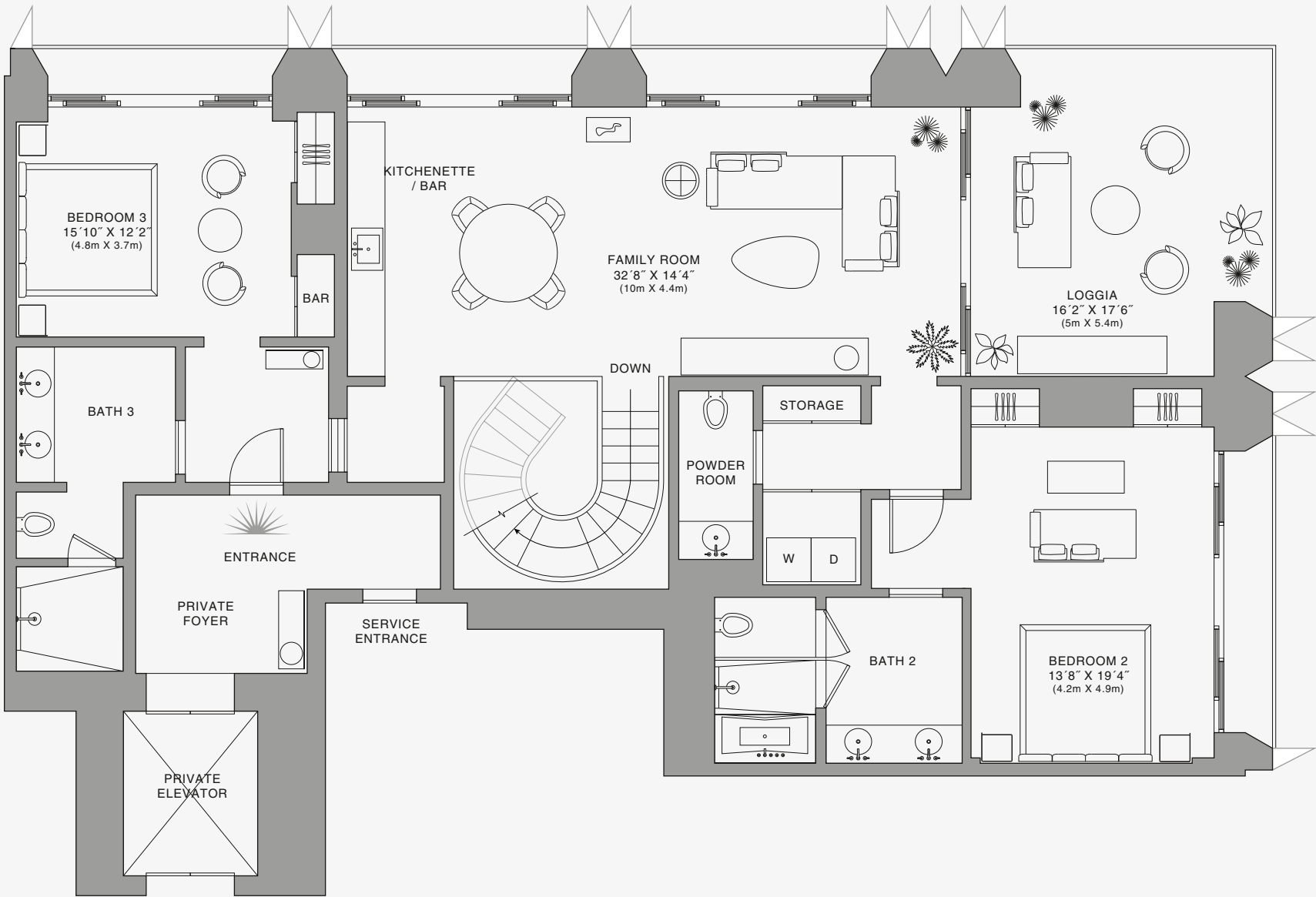
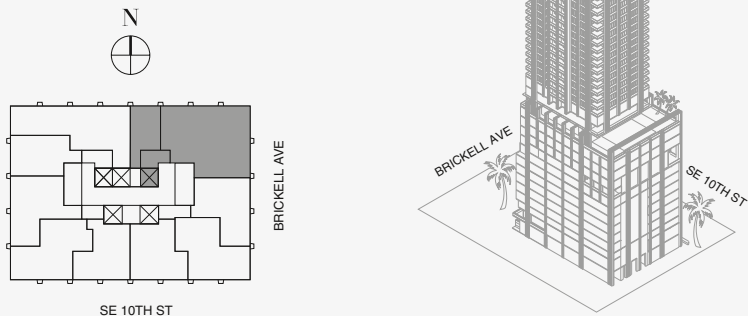
- 3 Bedrooms
- 3 Bathrooms
- 2 Powder Rooms

SQUARE FOOTAGES (SQUARE METERS)

- Indoor: 4,030 SQF (375 SM)
- Outdoor: 790 SQF (73 SM)
- Total: 4,820 SQF (448 SM)

FEATURES

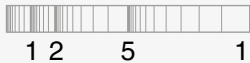
- 888 Duplex Suite w/ Grand Staircase
- 888 Room
- Furniture by Dolce&Gabbana
- 11' Ceiling Height
- 2 Loggias & Outdoor Kitchen
- Views: North East

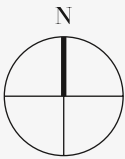


Biscayne Bay

UPPER FLOOR

Stated dimensions are measured to the exterior boundaries of the exterior walls and the centerline of interior demising walls and in fact vary from the dimensions that would be determined by using the description and definition of the "Unit" set forth in the Declaration (which generally only includes the interior airspace between the perimeter walls and excludes interior structural components). For your reference, the area of the Unit, determined in accordance with those defined unit boundaries, is set forth on Exhibit "3" to the Declaration of Condominium. Note that measurements of rooms set forth on this floor plan are generally taken at the greatest points of each given room (as if the room were a perfect rectangle), without regard for any cutouts. Accordingly, the area of the actual room will typically be smaller than the product obtained by multiplying the stated length times width. All dimensions are approximate and may vary with actual construction, and all floor plans and development plans are subject to change. The Condominium is not owned, developed or sold by Dolce & Gabbana S.r.l or any of its affiliates (the "Brand"). Developer uses Dolce & Gabbana marks pursuant to a license agreement with the Brand, terminable according to its terms. The Brand assumes no responsibility or liability in connection with the project, and makes no representation or warranty in respect thereof.





RESIDENCE DUPLEX B

FLOOR 78 | TWO OF TWO

ROOMS

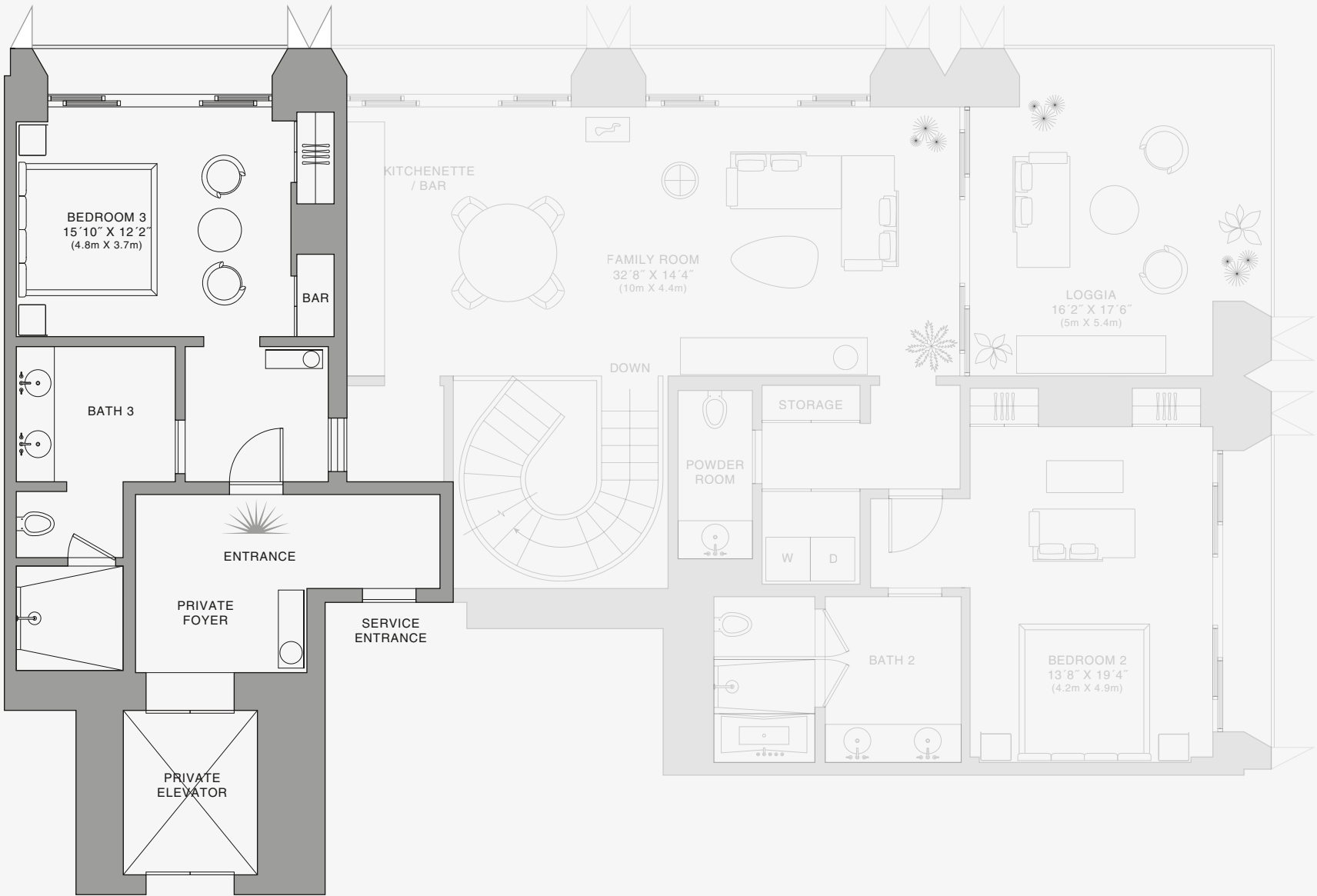
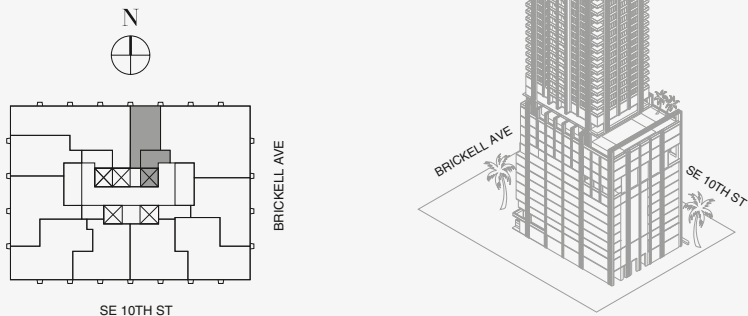
- 3 Bedrooms
- 3 Bathrooms
- 2 Powder Rooms

SQUARE FOOTAGES (SQUARE METERS)

- Indoor: 4,030 SQF (375 SM)
- Outdoor: 790 SQF (73 SM)
- Total: 4,820 SQF (448 SM)

FEATURES

- 888 Duplex Suite w/ Grand Staircase
- 888 Room
- Furniture by Dolce&Gabbana
- 11' Ceiling Height
- 2 Loggias & Outdoor Kitchen
- Views: North East



Biscayne Bay

UPPER FLOOR

Stated dimensions are measured to the exterior boundaries of the exterior walls and the centerline of interior demising walls and in fact vary from the dimensions that would be determined by using the description and definition of the "Unit" set forth in the Declaration (which generally only includes the interior airspace between the perimeter walls and excludes interior structural components). For your reference, the area of the Unit, determined in accordance with those defined unit boundaries, is set forth on Exhibit "3" to the Declaration of Condominium. Note that measurements of rooms set forth on this floor plan are generally taken at the greatest points of each given room (as if the room were a perfect rectangle), without regard for any cutouts. Accordingly, the area of the actual room will typically be smaller than the product obtained by multiplying the stated length times width. All dimensions are approximate and may vary with actual construction, and all floor plans and development plans are subject to change. The Condominium is not owned, developed or sold by Dolce & Gabbana S.r.l or any of its affiliates (the "Brand"). Developer uses Dolce & Gabbana marks pursuant to a license agreement with the Brand, terminable according to its terms. The Brand assumes no responsibility or liability in connection with the project, and makes no representation or warranty in respect thereof.

